

INFORMATION MEMORANDUM

**QUALITY COMMERCIAL/RETAIL SUITES FOR
SALE OR LEASE AT AN AFFORDABLE RATE**

12 Salonika Street, Parap

February 2018



12 SALONIKA STREET PARAP

Executive Summary

# No.	Status		Level	Car Spaces	Area (sq.m)		Leasing	Pricing	Availability	Fit-out
					Internal	Total	Rent	Proposed Price List		
101			G	2	252	252		SOLD		
102	Leased	Dentist	G	1	189	189		SOLD		
104			G	1	277	277		\$650,000		
110	Leased	Remmah Properties	G	5	168	168		\$765,000		
114			G	1	109	109		SOLD		
116	Leased	Territory Laundry	G	2	150	150		\$595,000	Immediate	
117			G	1	162	162		\$324,000	3-4 months	Can be fitted out
118			G	3	317	317		\$634,000	3-4 months	Can be fitted out
152	Leased	Q Bar and Café	G	3	623	623		SOLD		
201			1	9	543	543		SOLD		
205	Leased	IPAR	1	1	193	193		SOLD		
206			1	1	228	228		\$525,000	3-4 months	Can be fitted out
215			1		301	301		SOLD		
216			1	3	421	421		SOLD		
217			1	1	144	144		Under offer	3-4 months	Can be fitted out
218			1	1	142	142		Under offer	3-4 months	Can be fitted out
219			1	1	190	190		Under offer	3-4 months	Can be fitted out
220			1	1	70	70		Under offer	3-4 months	Can be fitted out

Rent Reviews:	Negotiable
Outgoings:	Outgoings are included in the rental. Tenancy electricity (incl. A/C electricity), chilled water supply, security and cleaning are all paid direct by the tenant in addition to rental.
Car Parking:	The tenant is responsible for the cleaning of tenancy areas. The body corporate/caretaker is responsible for common area cleaning.
Comments:	The Avenues, situated at 12 Salonika Street, Parap offers a unique range of opportunities for tenants and owner occupiers and would suit a multitude of end users.

Now well established and only 5 minutes' drive from the Darwin CBD why would you position yourself anywhere else?

- Easy access.
- Good parking available on and off street.
- Beautiful landscaping.
- Incredible amenity.
- Environmentally friendly.
- Established restaurants, cafes and bakery,
- Child Care Centre.
- Existing Health Services including Optometrist, Chiropractor, and a Dentist.

Knight Frank is now marketing a range of suites that would suit both retail and commercial end users. We see opportunities that exist for:

- Doctor's surgery.
- Convenience Store.
- Delicatessen.
- Recruitment agencies.
- NGO's.
- Engineers and Architects.
- Real estate. Agency
- Mortgage Brokers.
- Insurance agencies/companies.
- Hair and Beauty.
- Gyms.

We have a range of ground floor and first floor suites available for sale and/or lease. There are attractive incentives on offer for leasing deals and we are very competitive on the rental front. We have tenancies from as small as 70sqm and can accommodate an office requirement of up to 720sqm and a myriad of smaller tenancies in between this.

The commercial tenancies have access to the Boardroom which can be booked through the caretakers for private meetings. There is also access to the business atrium which can be accessed for an informal meeting or break-out area for staff. This space can also be booked for functions and events and provides businesses in The Avenue with a point of difference to other business hubs and office precincts.

On the ground floor we have tenancies that range from 162sqm up to 317sqm and if need be we can accommodate a combined tenancy of just under 480sqm. These tenancies are currently 'cold' shells but the owner will consider refurbishing to a 'warm shell' prior to occupation/settlement.

On the first floor we have tenancies available from 70sqm and can accommodate a requirement of in excess of 700sqm if need be. We have other smaller tenancies of 142sqm, 228sqm and a range of other tenancy sizes also.

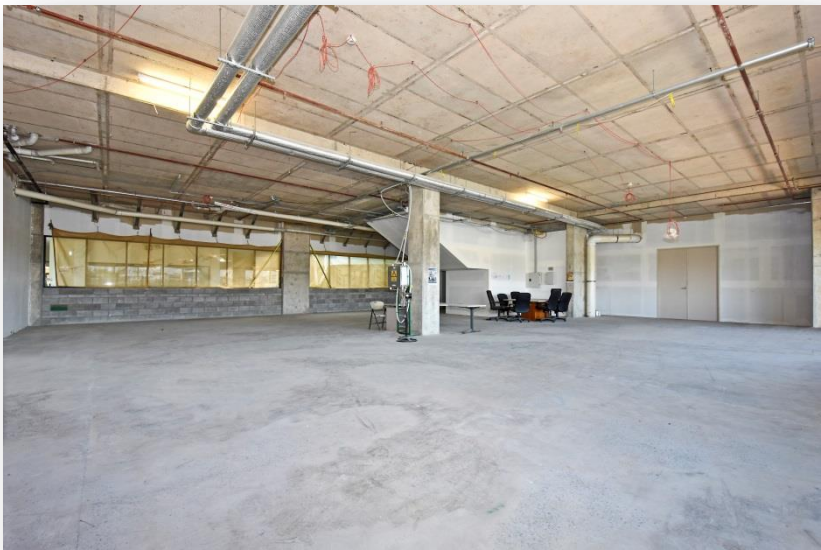
Incentives

Fit-out contributions and rent free are all able to be negotiated as are the rents on the tenancies that we have available. We strongly recommend interested parties make a time to come and meet with us to discuss what we can deliver for your business.

NABERS:	Not Rated
---------	-----------

GST:	All quoted rentals, fees and charges are exclusive of GST
------	---





12 SALONIKA STREET
PARAP

Contact Details

For further details or to arrange an inspection please contact:

Knight Frank (NT)

Level 2, 46 Smith Street
Darwin NT 0800

Michelle McRae

Phone: +61 (0) 8 8982 2500

Mobile: 0448 882 399

Email: michelle.mcrae@au.knightfrank.com

Matthew Knight

Phone: +61 (0) 8 8982 2500

Mobile: 0413 058 020

Email: matthew.knight@au.knightfrank.com